



## *Invacare*® | **Aquatec**® *Ocean Family*

The **Aquatec Ocean** series of shower commode chairs offers a flexible, modular solution for a wide range of clients. The range consists of transit, self-propel, tilt in space as well as powered tilt and height models.

Trusted Solutions,  
Passionate People



# Invacare<sup>®</sup> | Aquatec<sup>®</sup> Ocean, SP & XL

A range of high quality, modular, stainless steel shower chair commodes that are designed to support a wide range of clients and conditions.



**Aquatec Ocean**



**Aquatec Ocean SP**

## **Aquatec Ocean SP:**

Self-propel model with 24" wheels, quick-release axles and four castors.

- Stainless steel, **corrosion free** frame.
- Individually adjustable seat height: **no tools** required.
- Tension **adjustable backrest**, can be adjusted to accommodate body shape and support posture.
- Space-saving push bar to enable optimal positioning over the toilet.
- Ergonomic, **flip up armrests** can be adjusted to two different height levels.
- Height-adjustable, **swing-away and detachable legrests** for ease of transfer.
- Fold-away, angle adjustable, textured footplates with heel loops for safe positioning.

## Features & Options



### **Ocean XL**

More space between the armrests with a load capacity of up to 395 lbs.



### **Adjustable Back**

Machine washable. Adjustable backrest can be altered specifically to the patient.



### **Soft Seat**

Standard soft seat with key shaped cut out for hygiene access.



### **Adjustable Footrests**

Height and angle adjustable swing away footrests with textured footplates and heel loops.



### **Easy Clip**

Easy clip allows individually adjustable seat height.



- Stainless steel corrosion free frame.
- Seat tilt can be individually adjusted (tilt angle 0°- 35°).
- Stainless steel gas struts.
- Extremely stable even at maximum tilt angle.
- Seat height adjustable in 3 steps, no tools required.
- Comfortable, ergonomically contoured seat.
- Machine-washable tension adjustable backrest can be adjusted for positioning of the spine.

## Features & Options



### Headrest

Height and depth-adjustable headrests included. Ergonomic headrest also available.



### Seat Tilt

Tilt angle 0° - 35°.



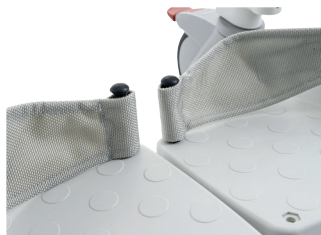
### Directional lock

Easy to operate brakes on 3 castors, 1 castor with directional lock to help push the chair in a straight line.



### Adjustable seat height

Adjustable in 3 steps, no tools required. 19.5" - 23.5"



Height and angle adjustable swing away footrests with textured footplates and heel loops.



Machine washable. Adjustable backrest can be altered specifically to the patient.



Standard soft seat with key shaped cut out for hygiene access and insert (supplied as standard on VIP).



Toilet pan with handle and cover (standard on all models).



# Invacare<sup>®</sup> | Aquatec<sup>®</sup> Ocean E-VIP

With its full powered adjustment, the **Aquatec Ocean E-VIP** shower chair commode allows caregivers to carry out personal care in safety and comfort; minimising the risk of injury. Adjustment of the height and tilt is possible at the push of a button, ensuring an effortless working environment.

The **Ocean E-VIP** can be accessorised to suit a wide range of physical needs, making it a cost effective alternative to prescription based chairs. The **Ocean E-VIP** has a 330 lbs. weight limit.



- Seat height can be adjusted between 20" - 41" to allow easy access and effortless transfers.
- Seat tilt can be tilted forwards and backwards (tilt angle -5° to 35°) to achieve a comfortable seating position. The -5° position offers easier transfer into the chair.
- Particularly stable even at the maximum tilt angle and maximum seat height.
- Clearly laid out hand control for simple adjustment of the seat height and tilt (4 buttons only).
- Fully sealed components: Safe for use in the shower.
- Can be cleaned at temperatures up to 85° C.
- 3 year warranty.

## Features & Options



### Headrest

Comfortable headrest which can be adjusted horizontally and vertically.



### Seat Tilt

Tilt angle 0° - 35°.



### Directional lock

Rear castor is equipped with a directional lock for straight travel to reduce back strain.



### Toilet Pan

With handle and cover.



#### Safety Bar

For additional safety. Client can grip bar for additional re-assurance. 10167-10 for all models of the Ocean series (except ocean XL). Length: 22"



#### Frontal Splash Guard

Simply snap-on. (Fits soft seat and key-shaped cut out). 16511 for all models of the Ocean series.



#### Calf Support & Footrest

Increased support helps distribute load to avoid pressure on lower limbs. **1556894** Left **1556893** Right



#### Soft Seat Insert

For soft seat with key-shaped cut out when commode function is not required. **16343**



#### Hygiene Backrest

Easy to clean. Ideal for commercial care. **1575299**



#### Toilet Pan

With handle and cover. **10230**



#### Lateral Support

This support reduces the backrest width and can help position the trunk.



#### Wider XL Armrests

Armrests by 3" each side. Does not increase the weight limit. **1470086**



#### Chest-belt & Pelvic Belt

To ensure necessary safety during the positioning process. **1470081** Chest belt, grey **1470082** Pelvic belt, grey (1470081 Standard on EVIP)



#### Armrest Locking Device

Locks armrest into upright or lowered position. **1470077** for all models of the Ocean series.



#### Ergonomic Soft Seat

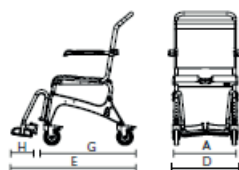
Allows immersion into the seat for pelvic stability and comfort. **1531259**



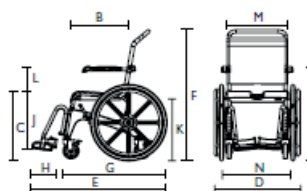
#### Ergonomic Soft Seat

With small opening suitable for smaller and young adults. **16342** for all models of the Ocean series.

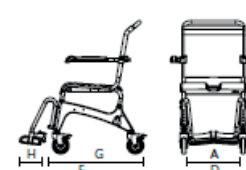
Dimensions					
Seat Width	19" (A)	19" (A)	19" (A)	19.5" (A)	19" (A)
Seat Depth	18" (B)	18" (B)	18" (B)	18" (B)	18" (B)
Seat Height	19" - 24" (C)	19" - 24" (C)	19" - 24" (C)	19.5" - 23.5" (C)	20" - 41" (C)
Total Width	22" (D)	26.5" (D)	25" (D)	22.5" (D)	29" (D)
Total Depth	36" (E)	42" (E)	36" (E)	42" (E)	40" (E)
Total Height Without Adjustable Headrests	38" - 43" (F)	38" - 43" (F)	38" - 43" (F)	44.5" - 53.5" (F)	42" - 64" (F)
Depth Without Footrests	28" (G)	34" (G)	27" (G)	33" (G)	40" (G)
Footplate Depth	6" (H)	6" (H)	6" (H)	6" (H)	6" (H)
Height to Armrest	27" - 33" (I)	27" - 33" (I)	27" - 33" (I)	28" - 34" (I)	28.5 - 32" (I)
Height, Footrests to Seat	10" - 19.5" (J)	10" - 19.5" (J)	10" - 19.5" (J)	13.5" - 19.5" (J)	13.5" - 19.5" (J)
Height, Ground to Lower Seat Edge With Holder for Toilet Pan	13.5" - 18.5" (K)	13.5" - 18.5" (K)	13.5" - 18.5" (K)	-	-
Height, Seat to Armrest	9.5" (L)	9.5" (L)	9.5" (L)	9.5" (L)	9.5" (L)
Width Between the Armrests	18" (M)	18" (M)	21" (M)	20" (M)	19" (M)
Tilt Angle Seat	-	-	-	0° - 35°	-5° - 35°
Castors	5" (127 mm)	5" (127 mm)	5" (127 mm)	5" (127 mm)	5" (127 mm)
More Information					
Weight	32 lbs	43 lbs	34 lbs	47.5 lbs	86 lbs
Load Capacity	330 lbs	330 lbs	395 lbs	330 lbs	330 lbs
Colour	White	White	White	White	White



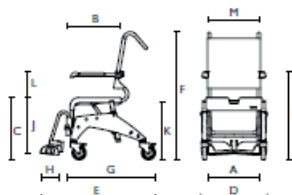
Ocean With Casters



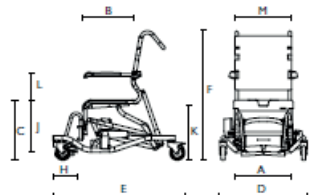
Ocean 24" SP



Ocean XL



Ocean VIP



Ocean E-VIP